

RECEIVED
LARAMIE COUNTY
CHEYENNE, WY

'88 DEC 23 AM 9 09

CERTIFIED LAND CORNER RECORDATION

DESCRIPTION OF CORNER EVIDENCE FOUND, AND ORIGINAL RECORD (If known)

Found: Nothing found for corner. Used witness corners to establish position for monument.

Sec. 13

Sec. 18

Accessories found - See notes on back.

Sec. 24

Sec. 19

GLO: Set a limestone 20" x 10" x 4" for corner to Sections 13 & 24, T. 13 N., R. 65 W.

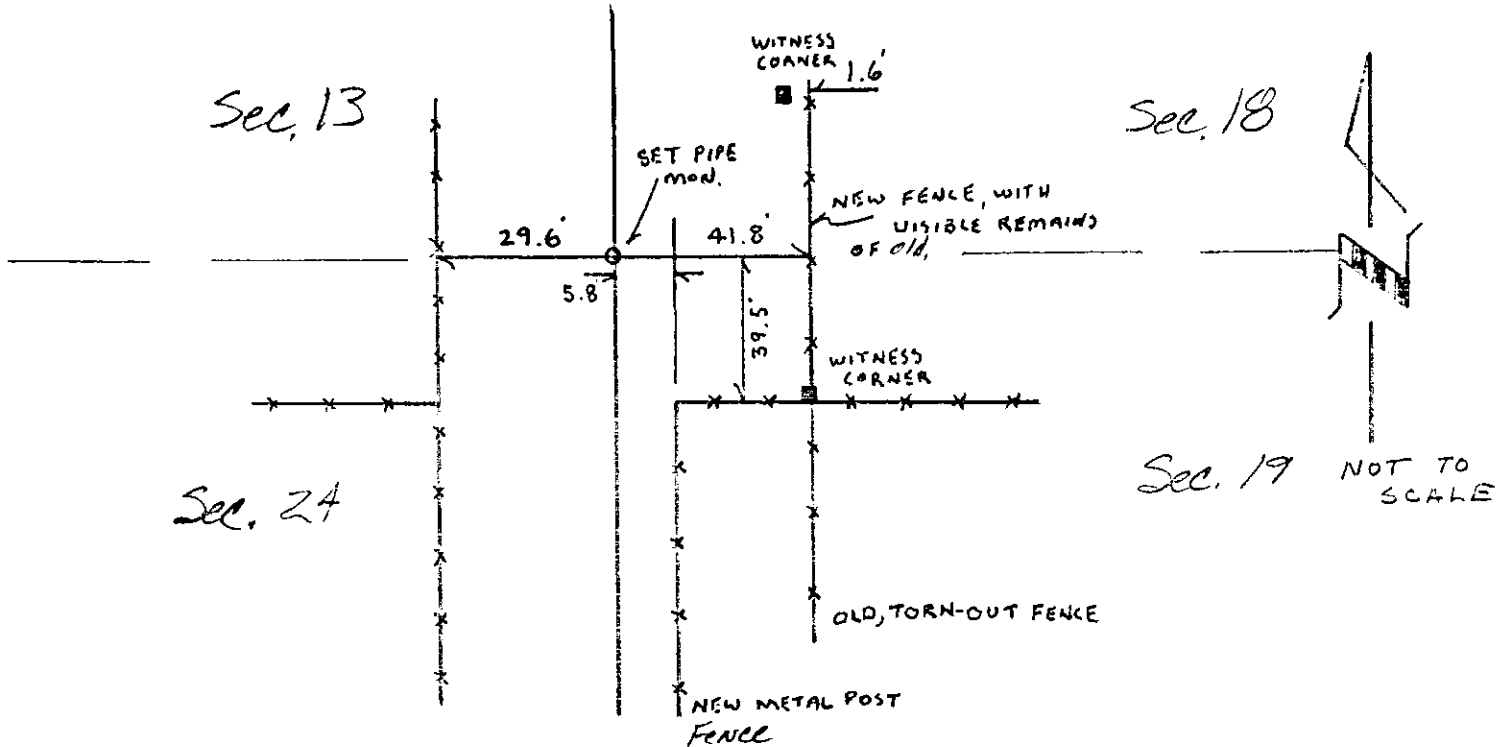
T 13N

R 65W R 64W

DESCRIPTION OF MONUMENT AND ACCESSORIES ESTABLISHED TO PERPETUATE THE ORIGINAL LOCATION OF THIS CORNER:

Set: Set aluminum pipe monument, 2" i.d., 36" long, with 3" aluminum cap. See Map of Survey filed with Laramie County Clerk for dimensions to adjacent corners.

SKETCH, WITH COURSE AND DISTANCE TO ADJACENT CORNER IF DETERMINED IN THIS SURVEY. (May Sketch or Paste Reproduction on Reverse Side.)

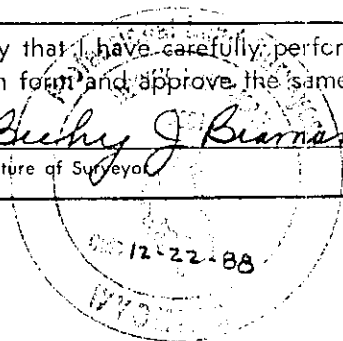


I, BECKY J. BRAMAN certify that I have carefully performed or reviewed the work done on the diagrammed corner as reported on this recordation form and approve the same.

Becky J. Braman
Signature of Surveyor

PLS 3881
Registration No.

STATE OF WYOMING,
Office of Clerk and Recorder,
County of LARAMIE



This "corner record" was filed for record on the _____ day of _____, 19____, was noted on the cross-index plat and is assigned page No. _____, in book No. _____.

County Official			
Cross Index No. <u>N 25</u>	T. <u>13N</u>	R. <u>65W. 4th Mer.</u>	
<u>N 1</u>	T. <u>13N</u>	R. <u>64W</u>	Mer.
_____	T. _____	R. _____	Mer.
_____	T. _____	R. _____	Mer.
_____	T. _____	R. _____	Mer.
_____	T. _____	R. _____	Mer.
_____	T. _____	R. _____	Mer.

Witness corner - yellowish, tan granite stone lying southeast with chiseled "WCCR" on north face. Stone is 7" E-W, 6" N-S, protrudes 7" above ground.

Witness corner - Yellowish granite stone lying northeast. Stone is 8" N-S, 6" E-W, 11" vertically, broken off level with ground. No scribing visible.

Note: Laramie County Engineer's office has no specific notes on the witnessing of this road, but other notes, especially the Chalk Bluffs Road notes, show corners set 40 feet to the East and West of North-South road and set at 56.4 feet diagonally from intersections, usually NE and NW.